

**PULSE**

**Electric  
Wheelchair**



**USER MANUAL**

## Safety guide

- Be sure to read this Safety Precautions carefully before use for proper use.
- If you do not follow the instructions in the "Safety Precautions", the product may be damaged, people may be injured, and even life may be involved.
- It is necessary to directly operate the wheelchair by the patient or his family. The family should understand the usage of the instructions before using.
- Please do not let the child and the person who cannot understand the operation operate the wheel bridge.
- Users are strictly prohibited from being transported by any type of transport vehicle in a wheelchair.
- It is strictly forbidden for users to modify the wheel list without the consent of the technician. The company is not responsible for any accidents.
- It is strictly forbidden for the user to stand on the pedals, otherwise the wheelchair will fall over.
- Please do not let your body out during walking, otherwise it will affect the stability of driving.

Any one is important about safety, so be sure to follow it.

★ After reading the instruction manual, you should keep it in a safe place for future use.

## Warning!

1. Electric wheelchairs are suitable for driving on more spacious indoors, garden trails and roads with good road conditions around the house. Do not approach motor vehicles and deep water surfaces. When encountering obstacles in front, you should bypass the road to avoid the risk of wheelchair tilt.
- 2, should not climb the long slope, so as to avoid overload of the circuit and motor and consume too much power.
- 3, do not rely on inertia to make the wheelchair ride up the steps, otherwise it will cause accidents or damage to the wheelchair.
4. The auxiliary wheel installed at the rear is used to prevent the wheelchair from tipping over when the angle of the uphill is too large.
5. Unless otherwise specified, all wheelchair adjustments should be carried out without a ride.
6. Please check the handrails before using the wheelchair, and if the handles are loose, please contact a professional technician for inspection.
7. Please don't change your posture when you lean back, otherwise the wheelchair will turn over.
8. The wheelchair should not walk on the escalator, otherwise serious personal injury will occur.
9. When the person in the wheelchair is to be transferred from the wheelchair to another place, first park the car in the nearest and optimal position, point the front wheel of the wheelchair to the place where it needs to be transferred, and confirm

(6) Daily cleaning and maintenance, apply neutral synthetic detergent, wipe with wet cloth, and then dry cloth,  
Wipe clean.

(7) Do not touch strong acid or alkali to prevent corrosion.

(8) The user routinely cleans and disinfects once a day, and the wheelchair must be thoroughly disinfected when the patient is replaced.

## 2. Special storage conditions and methods

The packaged wheelchair should be stored at a temperature not exceeding -10C~40C and the relative humidity should not exceed 80%. Non-corrosive gas and well ventilated, clean interior. During transportation, it should be protected from moisture, light, and away from heat.

## Six.the error code description

Please read the above operating instructions and precautions carefully. The wheelchair has undergone rigorous product testing and the product quality is excellent. If the error code appears on the LCD screen due to misoperation, please refer to the following error code description, repair according to the error description, if the hardware problem, please contact the customer service to explain the situation, timely repair and processing, the following describes the error code:

error code	cause of issue	Solution
0001	Rocker failure	When starting the wheelchair, release the rocker; if the fault still appears, contact your service representative.
0002	Left motor Hall failure	Please contact the maintenance staff
0004	Right motor Hall failure	Please contact the maintenance staff
0008	Left motor overcurrent or current detection fault	Please contact the maintenance staff
0010	Right motor overcurrent or current detection fault	Please contact the maintenance staff
0020	Power supply overvoltage or undervoltage	Please contact the maintenance staff
0040	15V voltage failure	Please contact the maintenance staff
0080	Left motor rate failure	Please contact the maintenance staff
0100	Right motor rate failure	Please contact the maintenance staff
0200	Left motor failure	Please contact the maintenance staff
0400	Right motor failure	Please contact the maintenance staff
0800	Communication failure	Please contact the maintenance staff

that the wheelchair is in the brake state.

10. When moving the wheelchair, please grasp the fixed connection part of the wheelchair, not the active part, such as the footrest device.

11. When parking is required during driving, just release the controller handle to reset, the electric wheelchair will automatically brake. When parking on the slope, the electric wheelchair can automatically brake the slope. For safety reasons, it is recommended to drive to the ground parking and tighten. brake.

12. Always check if the electrical connector is well connected, and if the solid screw is loose, adjust it in time.

13. The rated load of the wheelchair is 100kg. If the user weighs more than 100kg, please contact the manufacturer for special order.

14. When the wheelchair is driving on the inclined ground: the user must fasten the seat belt; if the slope is greater than 5 degrees when going downhill, please take care of the wheelchair and move forward with careful confirmation. If you are facing forward when going downhill, it may cause the user to lean forward and fall.

15. During the patient's use, routinely clean it once a day. When replacing infected patients, disinfectant must be used for thorough disinfection.

\*\*The product has a normal service life of 5 years from the date of delivery.

## Contents

1. 《Overview》 ...-4-
- 2.the scope of application ... -4-
- 3.the product introduction.....-4-
- (1) Product specification parameters, part names...-4-
- (2) Function Overview.....-5-
- (3) Operation of the wheelchair.....-5-
4. the instructions for use.....-7-
5. product maintenance ...-9-
6. the error code description.....-10-

## One.Overview

This instruction manual is applicable to electric wheelchairs and includes information on safety precautions, function descriptions, and maintenance of various models.

The graphics in this manual are for user's reference only. Please refer to the actual product for actual use.

## Two. Applicable to the map

This product is used for walking on the walking group with weak walking ability such as the elderly and the disabled (except for those who cannot judge the exercise environment). It is especially suitable for short-distance walks in indoor, courtyard, sidewalk and other environments. It is an elderly friend and disabled. The ideal travel tool for friends.

## Three. product introduction

### (1) Product specification parameters and part names

This product consists of frame, I-shaped, 8 o'clock PU front wheel, 10 inch hub motor rear wheel, remote control, battery basin, control basin, auxiliary wheel, seat back pad, foot pedal, etc.

Figure:

name	Total length	Total width	Total height	Seat width	Front wheel	Rear wheel
parameter	100CM	63CM	92CM	45CM	8inch	10inch
name	Seat height	Seat depth	Backrest height	Folding width	Net weight	Gross weight
parameter	50CM	40CM	40CM	30CM	22KG	100KG



- |                  |                    |
|------------------|--------------------|
| 1. Handle cover  | 9. Foot pedal      |
| 2. Handrail tube | 10. Foot strap     |
| 3. Frame         | 11. Control box    |
| 4. Brake         | 12. Cushion        |
| 5. Rear wheel    | 13. Remote control |
| 6. Battery box   | 14. Armrest pad    |
| 7. I-shaped      | 15. Back pad       |
| 8. Front wheel   |                    |

\*The graphics in this manual are for user's reference only. Please refer to the actual product for actual use.

### (2) Functional overview;

This wheelchair is designed for both safety and convenience. Its main features are:

1. Foldable aluminum alloy frame;
2. The overall structure is simple and novel, and the whole vehicle is light;
3. Foldable backrest;

automatically brake and display the forbidden line. It is recommended to tighten the rear wheel brake or open the manual mode at this time and seek help from the caregiver.

(3) When it is not on the road, it is also recommended to use the manual mode, which is boosted by the caregiver to ensure safety.

### 5, charging

(1) The special charger for the vehicle must be used to ensure safe use. Plug the charger's charging output plug into the charging socket at the back of the controller:

(2) The power plug of the charger is inserted into the power supply with the matching voltage and frequency;

(3) When the charging indicator on the charger turns green, it means that the power is sufficient. (The battery capacity is 10Ah. The charging time depends on the amount of stab in the original battery. The uncharged new battery is filled for about 4 for the first time. 5 hours), unplug the charger's hair source plug and charging output plug when sufficient.

(4) Charging method. Insert the charger charging head into the charging port on the bottom of the remote control, as shown in the figure.



## Five.product maintenance

### 1.maintenance

The electric wheelchair is based on the traditional manual wheelchair. It is superimposed and upgraded with high-performance power drive, intelligent control device, battery and other components. It has a manual control intelligent controller, which can encourage the wheelchair to complete the advance and retreat. A new generation of intelligent wheelchairs with a variety of functions, such as steering, is a high-tech product combining modern precision machinery, intelligent CNC, engineering mechanics and other fields. Please follow the instructions below for maintenance and maintenance:

(1) First of all, you must fully understand the device, how to use it, and familiarize yourself with the functions of the buttons, especially how to start and how to stop quickly. When encountering unexpected things, it can play a key role.

(2) Keep the body clean and dry in a dry place to prevent the parts from rusting.

(3) Solid rubber tires should not be in contact with oil or acidic substances to prevent deterioration.

(4) The main point of extending battery life is: regular charging makes the battery full. If the wheelchair is disabled, it is best to use the battery adequately. If it is not used for a long time, it is best to charge it once every half month.

(5) All parts of the vehicle should be wiped clean frequently to maintain a beautiful appearance.

- **Rocker:** Figure 1 above, push the rocker to control the direction and speed of the wheelchair;
- **Power switch:** The above part 2, when the power is down, the power is turned on, and the “drop” is turned on after the sound is turned on; the long power is turned off for 3 seconds, and the “drop” sounds after the sound is turned off, the shutdown is successful;
- **Speed limit gear:** The speed limit gear is reduced (Part 3 of the above figure), when the speed is reduced, the maximum speed limit is lowered; the speed limit gear is added (Part 4 of the above figure), and the maximum speed limit is raised when pressed. If the power is lower than 10%, it will automatically convert to the speed limit file. At this time, the “speed limit gear” will be displayed. If the power is lower than 2%, it will be automatically converted into the forbidden file. At this time, the “forbidden file” will be displayed.
- **Volume button:** The above components 5 and 7 respectively implement the volume addition and subtraction functions;
- **Entertainment function:** Bring your own Bluetooth (Part 10 on the above), turn on the Bluetooth function when pressed, (Figure 13 shows the Bluetooth logo), connect the mobile phone, wristband, etc. to the wheelchair via Bluetooth; Bring your own FM radio broadcast (on Figure 6), when the function is pressed, there is a voice prompt "Broadcast is on, continue to press the broadcast button to cut the table", indicating that the opening is successful, (the above picture shows the switch to display the FM icon), you can then connect the button to make the adjustment, The pause/play function can be implemented in Figure 9 above. To turn off the FM radio function, press the Bluetooth button.
- **Stabbing:** The component 8 in the above figure, the horn sounds when pressed, and does not ring;
- **LCD:** Figure 11 above shows the estimated remaining mileage. The typical battery life is 20km at full power (typical endurance refers to: 100kg load at full power, ambient temperature 25° C, continuous on a flat road at an average speed of 6km/h) When driving, the user will frequently affect the cruising range if he frequently turns, starts or stops or goes uphill. Figure 12 shows the current real-time speed. Figure 15 above shows the current gear. It is recommended to use the low-speed uniform speed. Drive, pay attention to safety; Figure 13 above shows the current entertainment function, the default is to enable the Bluetooth function; Figure 14 above shows the current battery power, when the battery is low, please charge it in time

3, electronic brakes  
This electric wheelchair adopts advanced electronic brake system, and it can stop when the user stops in any road condition. It is absolutely safe to use. Note that the electronic brake will consume some power after the shoulder movement. Long-term opening will reduce the cruising range of the wheelchair. It is recommended that the user turn off the controller without using a wheelchair to reduce power consumption.

#### 4, low battery smart brake

(1) The wheelchair supports two driving modes, electric and manual. When the electric wheelchair is turned on, the electric mode is automatically activated; in the off state, it is the manual mode. When the user stops, please tighten the left and right rear brakes.

(2) During the trip, if the power is less than 10%, it will automatically convert to the speed limit (the speed drops below 1.5km/h). In this state, the electric wheelchair can continue to drive for about 2 kilometers; if the power is lower than 2%, the intelligent electric wheelchair will

- 5, adjustable foot pedal;
- 5, electric manual one-button switching;
- 6, real-time speed display;
- 7, FM radio;
- 8, brushless wheel Yi motor;
- 8, Bluetooth kinetic energy;
- 10, intelligent fault prompts;
- 11, Low-power intelligent vehicle control;
- 12, FOC loss control technology.

#### (3) Operation of wheelchairs

1. Open the wheelchair packing box, take out the electric wheelchair and charger and other items (for the safety of transportation, the anti-overturning wheel and the controller are not fixed on the vehicle body);
2. Operating instructions for removing the handle:
  - (1) First push the handle up and push it up (as shown in Figure 1).
  - (2) When the handle is to be folded down, press firmly on the trigger, then remove the handle and press it back (Figure 1).
3. When opening the wheelchair, press the seat cushion on both sides of the seat cushion until the seat cushion is flat and snap into the groove of the plastic support block. (Reminder: pay attention to pressing the middle position of the seat as much as possible. The gap between the front section and the armrest frame is small. Be careful with the handle), the wheelchair can be easily opened, and then the soft back cushion and soft cushion are attached. When folding the wheelchair, please turn up the pedal, remove the soft back cushion and soft cushion, then lift the cushion upwards. The chair can be folded. (Figure 2) Do not apply pressure to both sides of the frame or handle with both hands. Improper folding or opening of a wheelchair is prone to damage.
4. Remote control installation: The remote control is installed on the right by default (if you need to adjust the installation position, you need to remove the fixing screws of the fixing frame first, and then change to the left to install). First unscrew the knob, insert the fixing rod into the slot of the fixed bracket, move the fixing rod back and forth to the appropriate position as needed, then screw in the knob and tighten it, then control the connector and control on the controller. Insert the corresponding connector on the upper part and tighten the connecting nut (as shown in Figure 3-1).



Figure 1



Figure 2

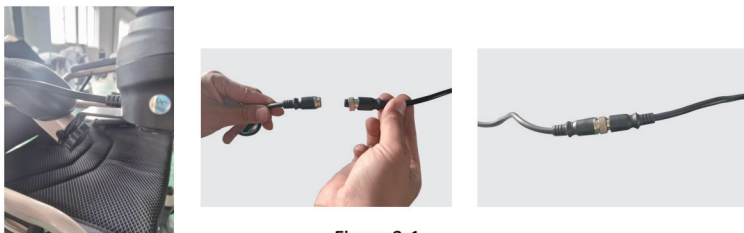


Figure 3-1

When the joints are docked, it is necessary to pay attention to the matching of the slots. The black arrows on the left and right connectors should be corresponding, and must not be forcibly inserted to prevent damage to the connectors (as shown in Figure 3-2).

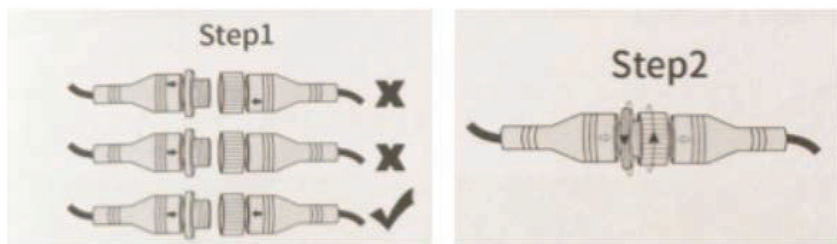


Figure 3-2

5. Install the anti-rolling wheel, insert the anti-overturning tube and the corresponding position of the rear part of the left and right frame respectively, and then fix it with screws (Figure 4)



Figure 4

#### Four. instructions for use

##### 1. Operation of electric wheelchair

- (1) After the operator is seated, turn on the power switch of the controller. After the drip-sound prompts, the wheelchair is turned on. The LCD displays the current power and remaining mileage. The system sets the safe start strategy. Please turn the joystick when starting, otherwise Prompt system failure, unable to boot;
- (2) The speed of the wheelchair is adjusted by the speed adjustment button on the controller. There are five gears in total. It is suitable to use low speed when starting. The real-time speed can be displayed during driving. The gear position cannot be changed during driving. The initial user recommends Drive at low speeds to avoid accidents due to unskilled operation.
- (3) Pull the handle to start slowly, the joystick handle forwards forward to the wheelchair, the joystick handle turns left to the left wheelchair, the joystick handle turns right to the right wheelchair, and the backward wheelchair retreats. Allow wheelchairs to travel freely;
- (4) If you need a whistle, press the button marked with the horn symbol on the controller.
- (5) The battery is fully charged and displays 5 grids. When the battery is low, the grid number is zero or the electric weight icon flashes. It is recommended that when the remaining battery power is insufficient, please charge it in time to keep the battery fully charged;
- (6) Shut down the power switch, and the wheelchair will be turned off after the drop-and-sound prompt.

##### 2. the controller control terminal function description

- 1, the joystick
- 2, power switch
- 3, speed limit file reduction
- 4, speed limit file plus
- 5, the volume button plus
- 6, FM
- 7, volume key minus
- 8, horn button
- 9, play / pause button
- 10, Bluetooth button
- 11, estimated remaining mileage
- 12, the current real-time speed
- 13, entertainment icons
- 14, volume
- 15, gear position

